


Groundwater in Regions C & D

Robert E. Mace, Ph.D., P.G.
Texas Water Development Board
presented to: **Study Commission
on Region C Water Supply**
Mt. Pleasant, June 21, 2010

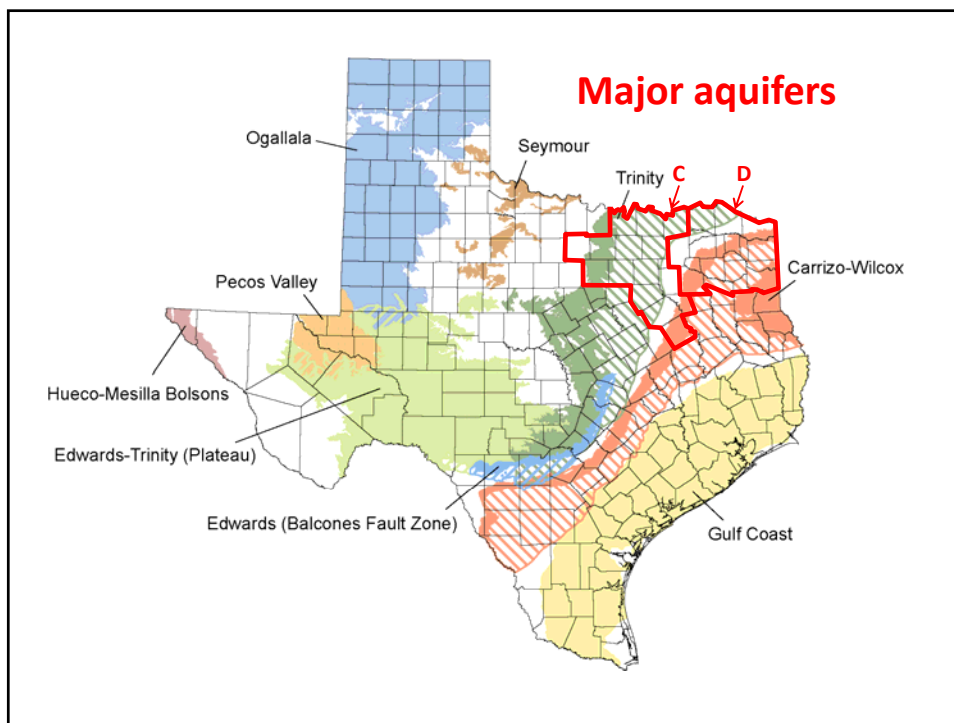


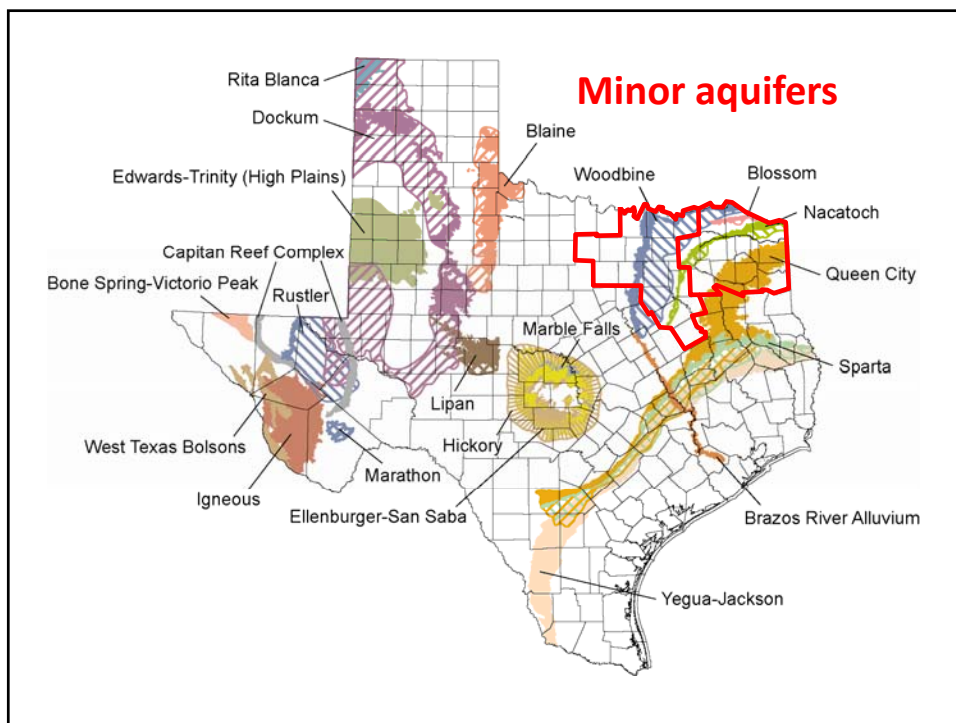
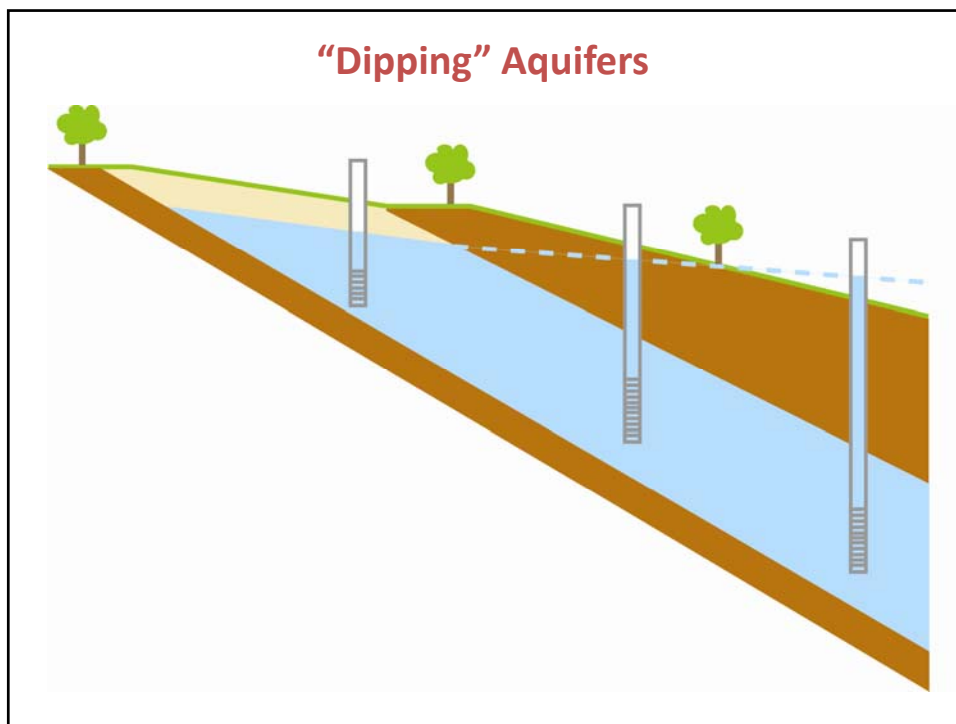
Outline

- Aquifers in C & D
- Groundwater availability and modeling
- Desired future conditions
- Groundwater availability in Regions C & D



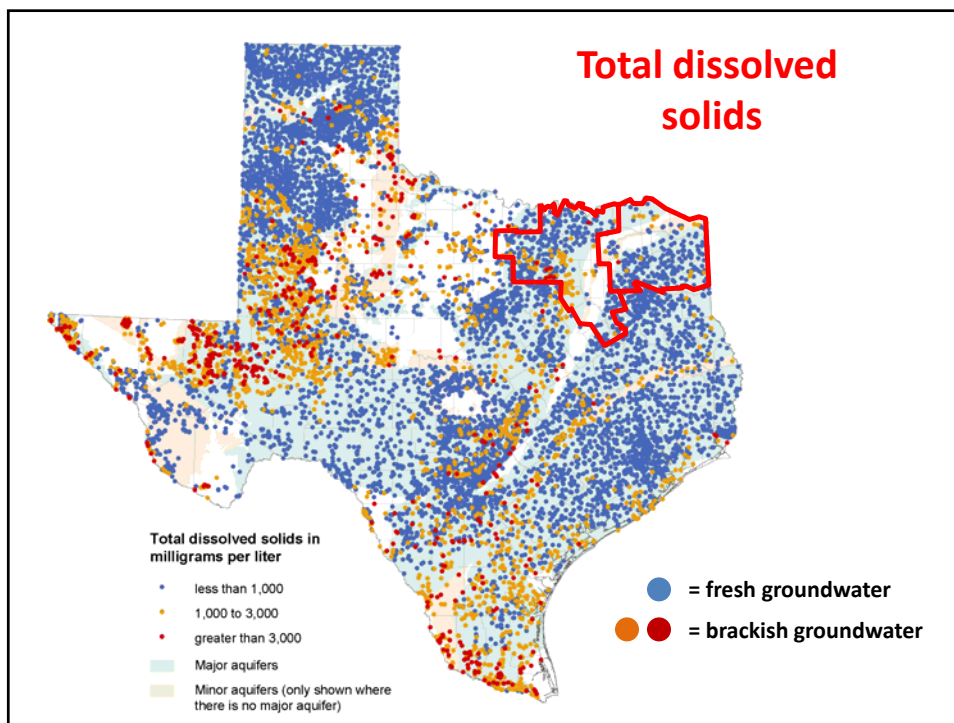
- **Aquifers in C & D**
- Groundwater availability and modeling
- Desired future conditions
- Groundwater availability in Regions C & D

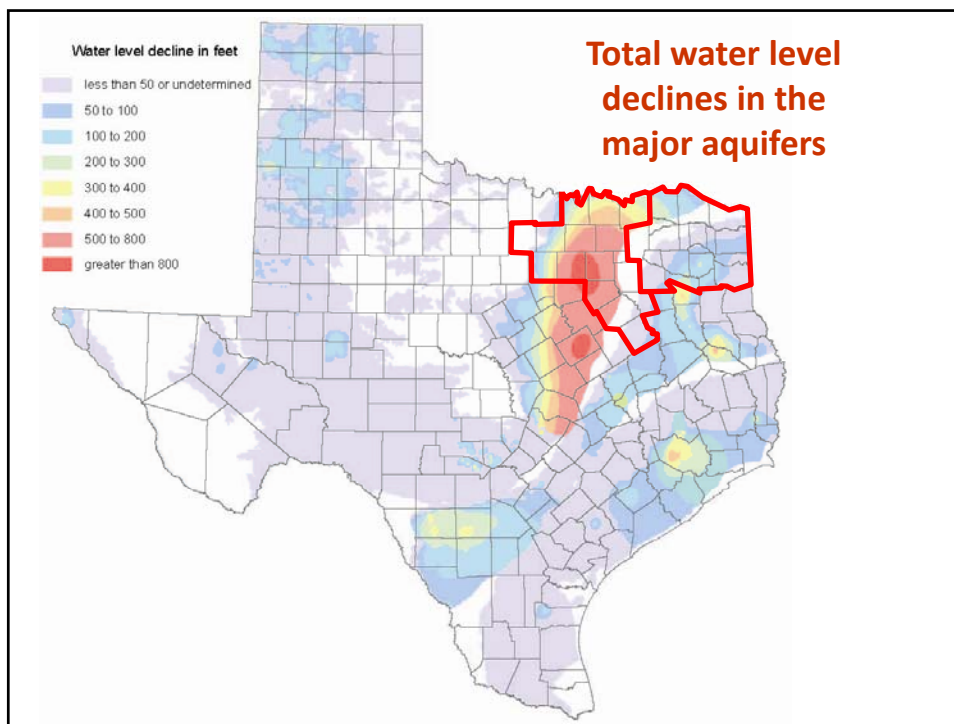






Sandstone





Outline

- Aquifers in C & D
- **Groundwater availability and modeling**
- Desired future conditions
- Groundwater availability in Regions C & D

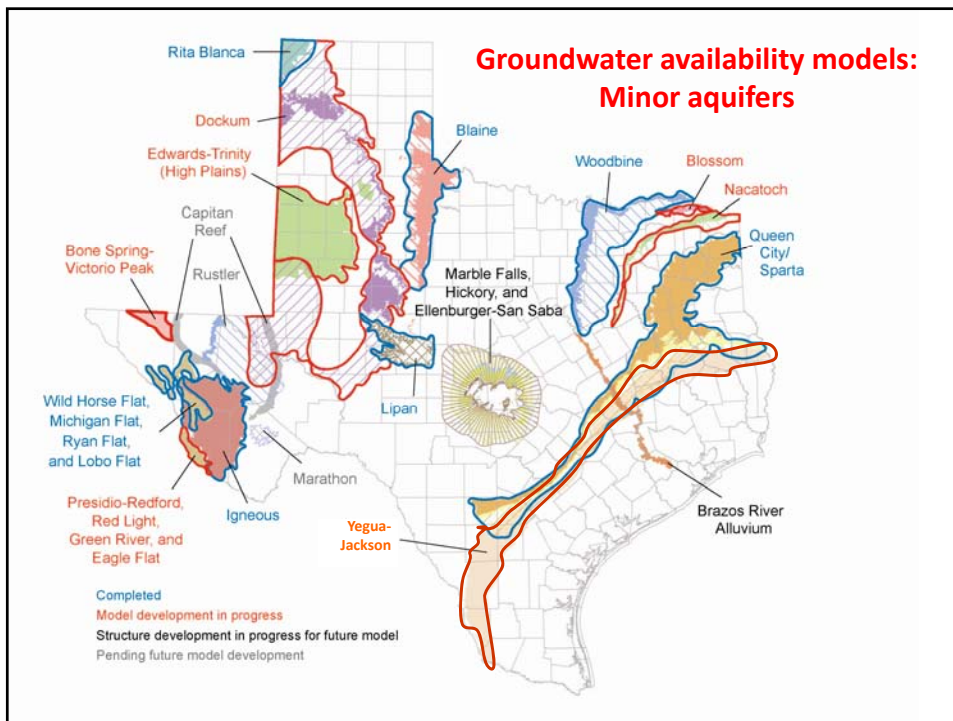
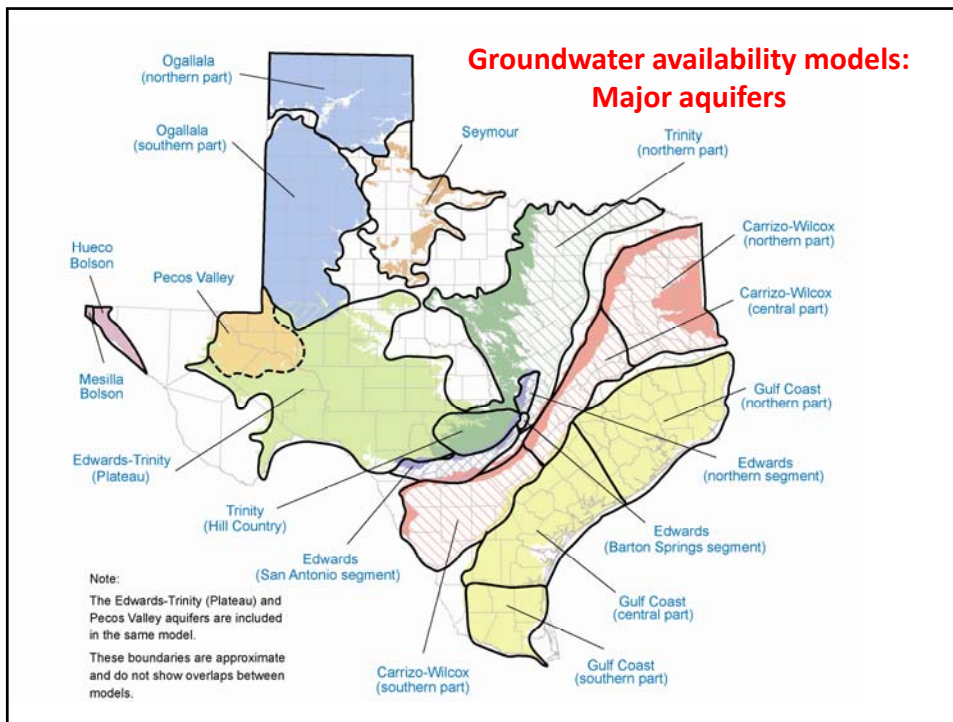


(policy) + (science) = groundwater availability

What is a Numerical Groundwater Flow Model?

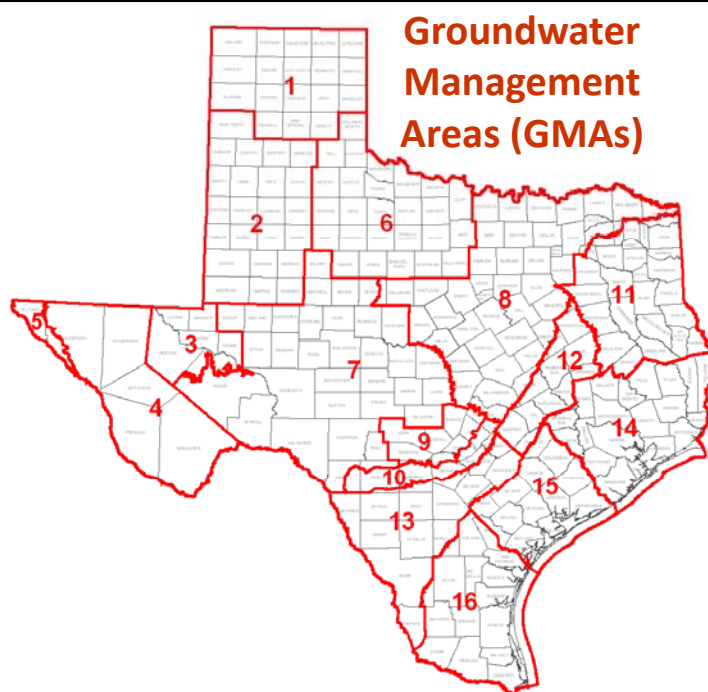
- 'The aquifer in a computer!'

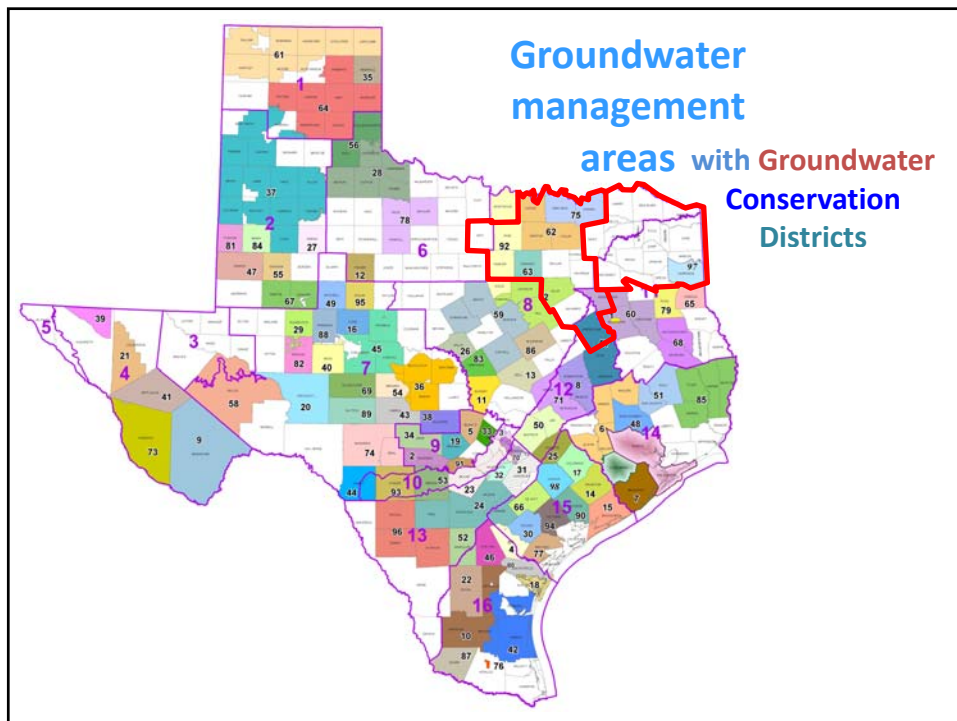
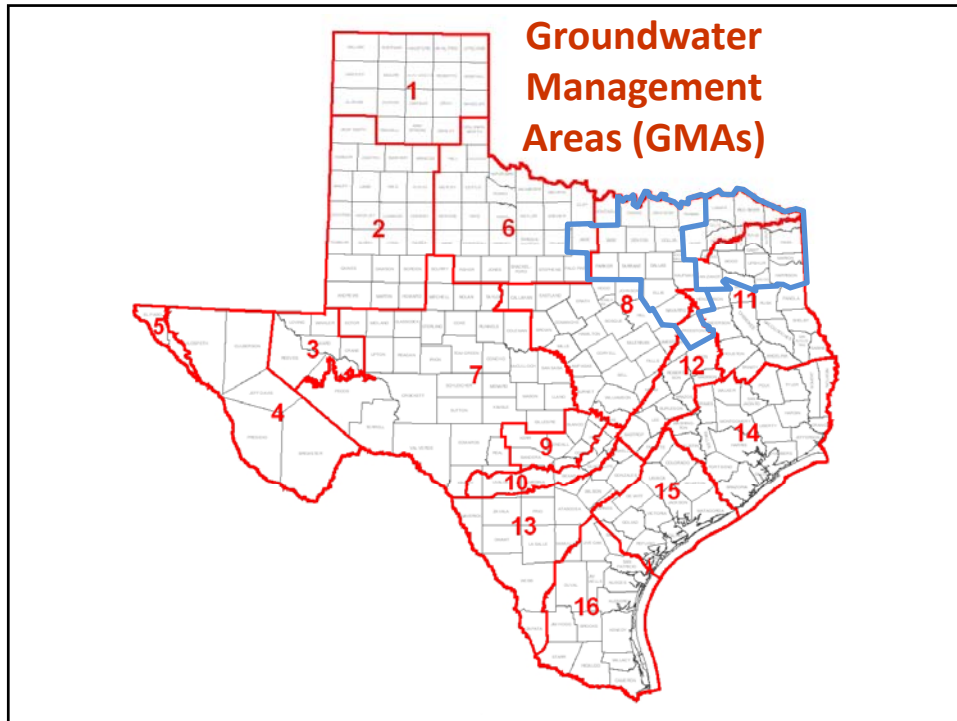


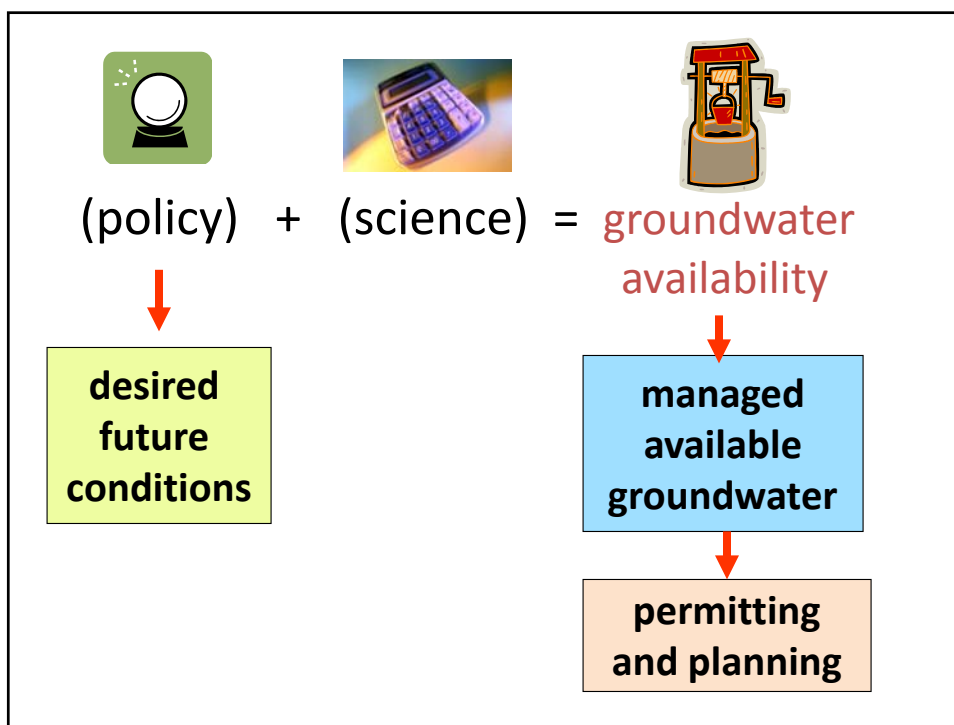
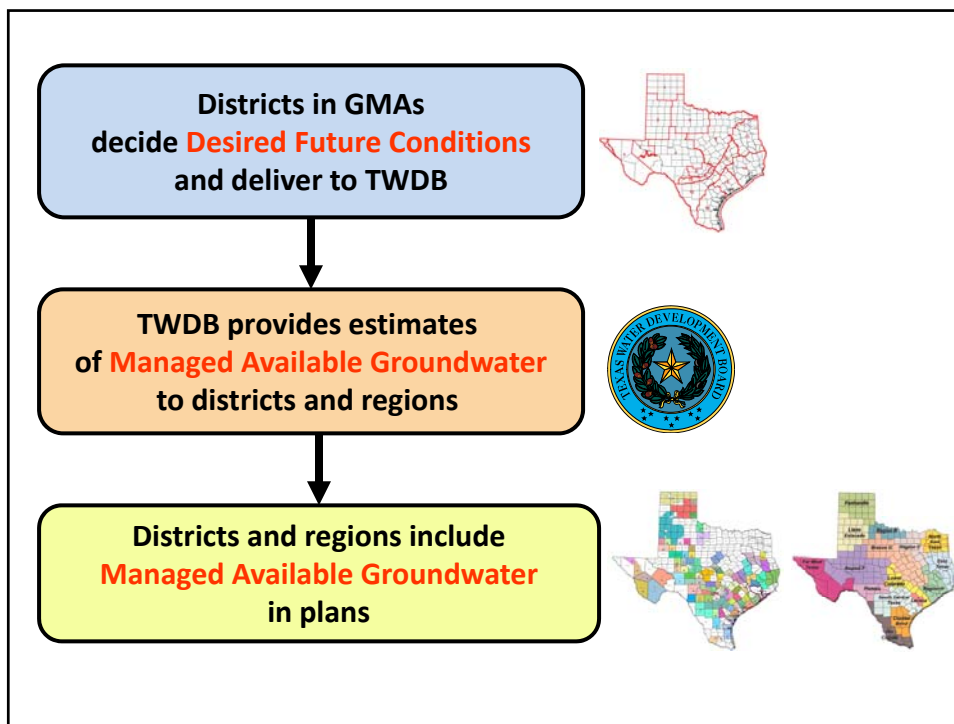




- Aquifers in C & D
- Groundwater availability and modeling
- **Desired future conditions**
- Groundwater availability in Regions C & D










Desired Future Conditions:

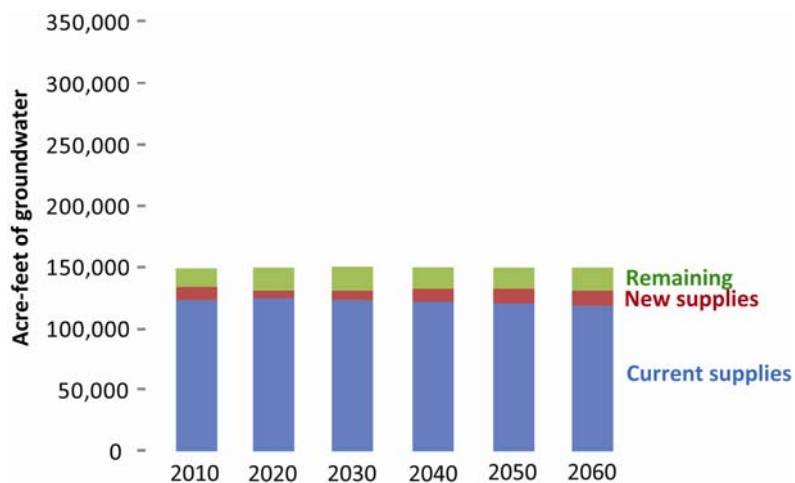
- **Statutory deadline: September 1, 2010**
- **Not in regional or state water plans unless earlier deadlines were met**



Outline

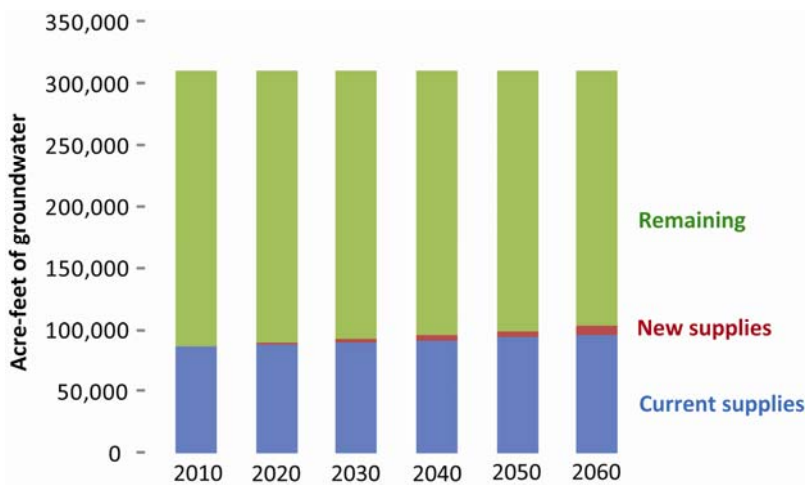
- Aquifers in C & D
- Groundwater availability and modeling
- Desired future conditions
- **Groundwater availability in Regions C & D**

Groundwater Availability and Supplies in Region C



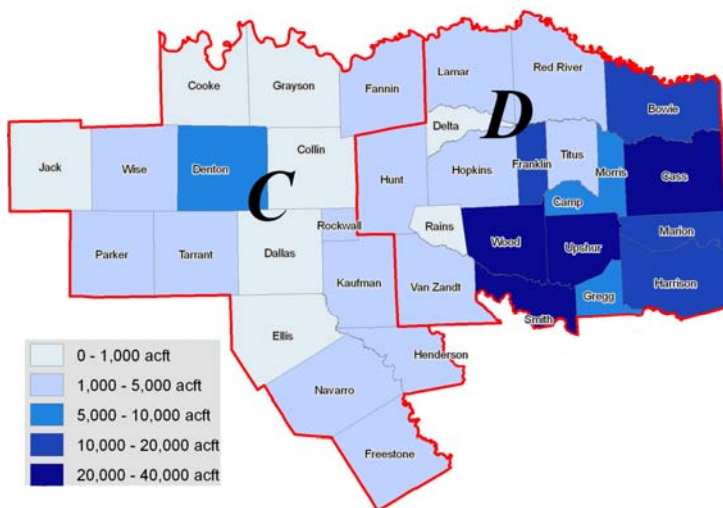
Data from 2010 Initially Prepared Plans

Groundwater Availability and Supplies in Region D



Data from 2010 Initially Prepared Plans

Distribution of Remaining Groundwater



More about groundwater in Texas



Groundwater in Texas:

www.twdb.state.tx.us/groundwater

Robert E. Mace:

(512) 936-0861

robert.mace@twdb.state.tx.us

