

EXPLANATION

- -1640 WELL USED FOR CONTROL--Number indicates altitude of the base of fresh water
- 1600--- WATER-QUALITY ZONE CONTOUR--Shows approximate altitude of the base of fresh water. Dashed where approximately located. Contour interval 100 feet (30 meters). Datum is National Geodetic Vertical Datum

NOTE: To obtain meters multiply feet by 0.3048

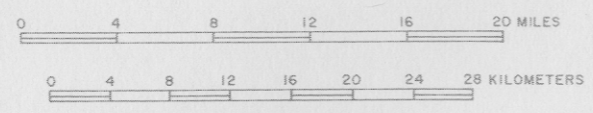
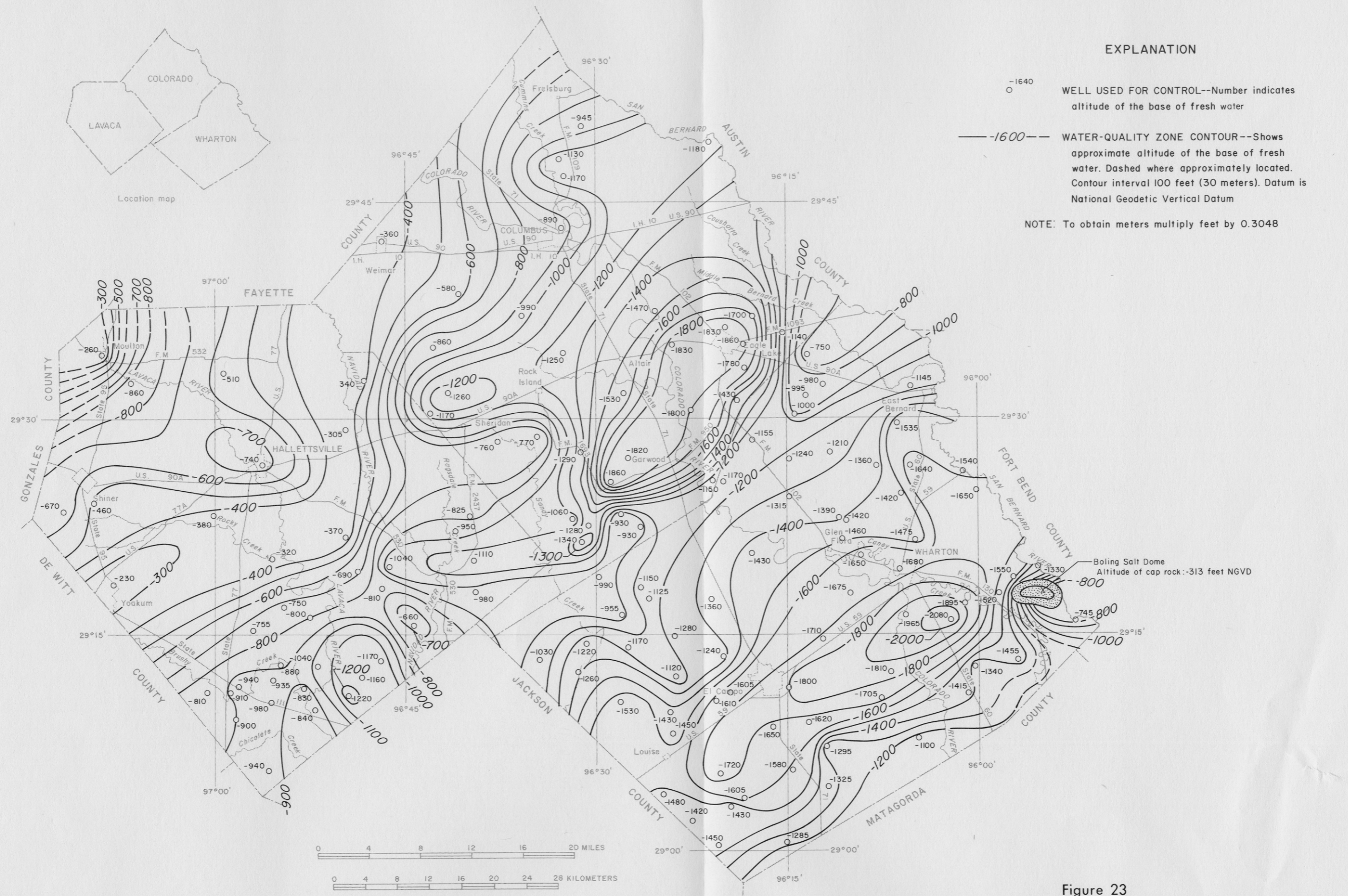


Figure 23

Approximate Altitude of the Base of Fresh Water

Base from U.S. Geological Survey topographic quadrangles