

	Total pumpage in 2020 (acre-feet)	Remarks
Municipal and industrial	540,770 (489,188)*	Full projected development
Irrigation	327,631	Do.
Domestic and livestock	37,960	Do.
Additional pumpage	144,794	Augment flow of San Marcos and Comal Springs
Total for aquifer	1,051,155	

*Bexar County only

	Simulation results			
	December 31, 2020		Changes from run 1	
	Water level (feet)	Depth to water (feet)	Water level (feet)	Depth to water (feet)
San Antonio area	381	299	-44	+44
Irrigation area	455	430	-40	+40

Recharge: Basic projected sequence

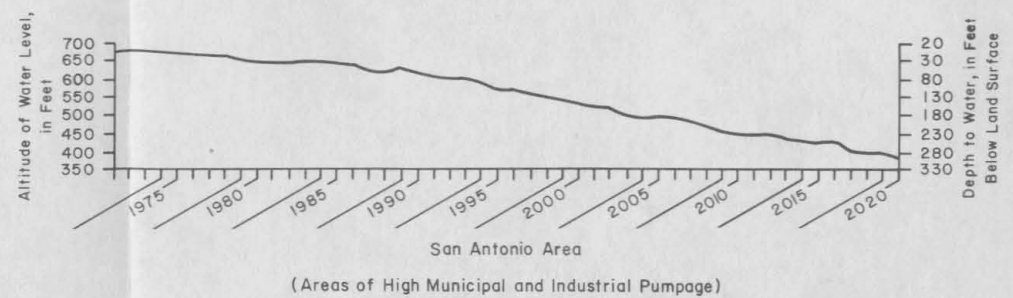
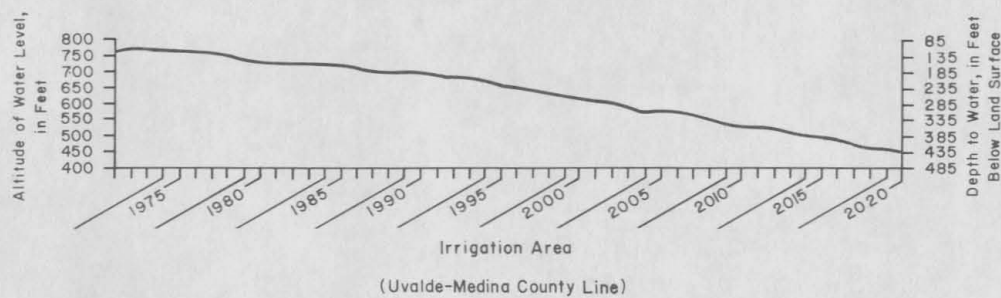
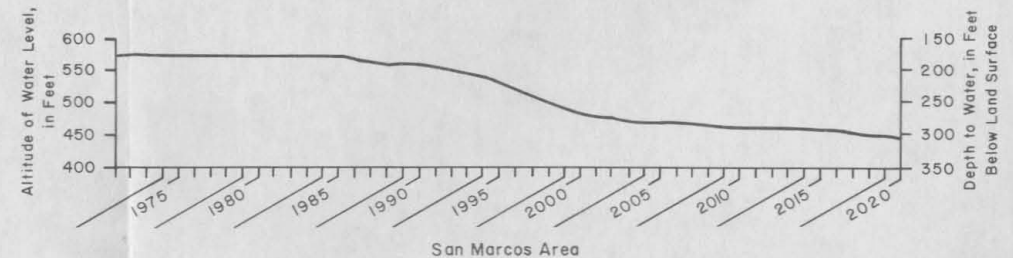
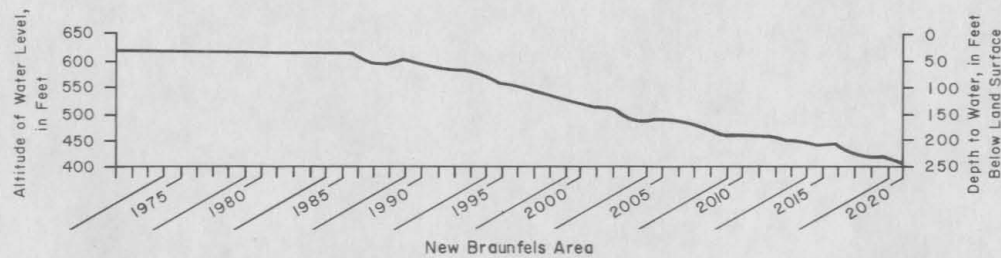
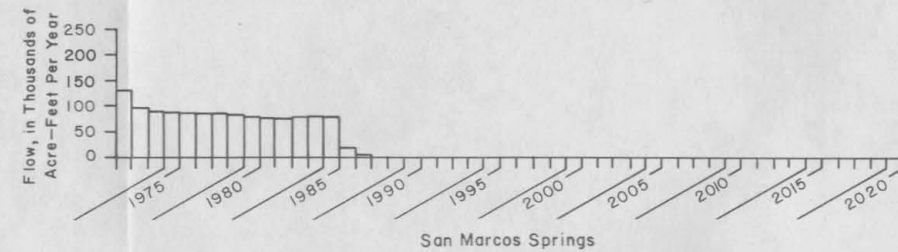
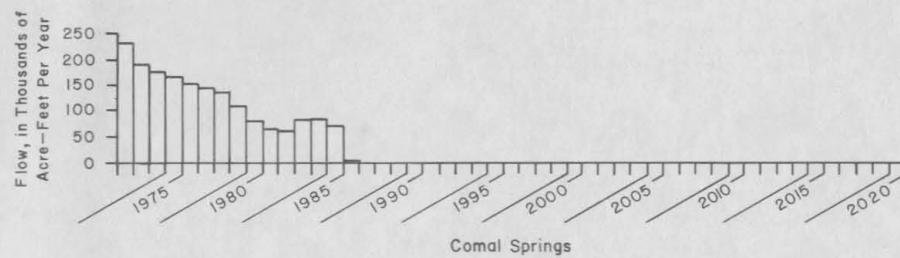
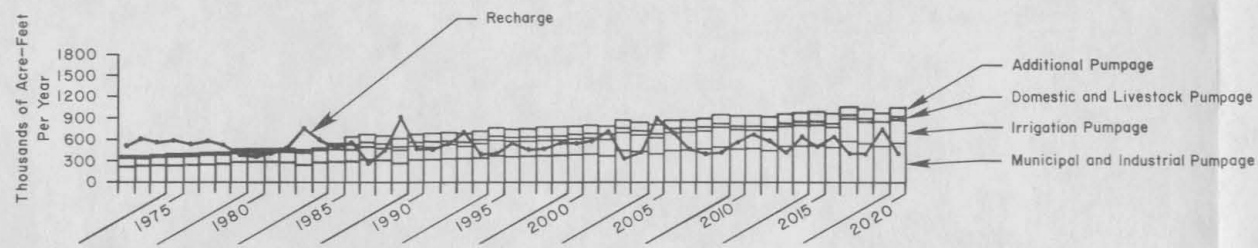


Figure 30
Selected Results From Simulation Run Twenty